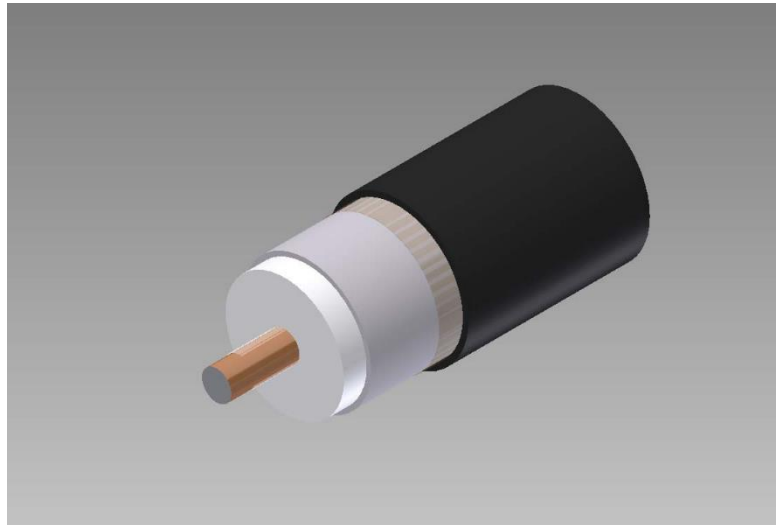


875 Series Coaxial Cable
Copper Clad Aluminum Conductor
Foamed Polyethylene Dielectric
Seamless Aluminum Tube Outer Conductor
Underground Floodant
Medium Density Polyethylene Jacket
Extra Thick Jacket



Cable Ordering Information

| Part Number | Description | NEC / CSA Listing |
|----------------------|-------------|-------------------|
| 750875JBX0BK00100001 | T10875JBX | n/a |

Characteristics

| Material | Detail | inches | mm |
|-----------------|------------------------------|--------|------|
| Inner Conductor | Copper Clad Aluminum | 0.194 | 4.93 |
| Dielectric | Foamed Polyethylene | 0.797 | 20.2 |
| Outer Conductor | Seamless Aluminum Tube | 0.875 | 22.2 |
| Floodant | Underground | --- | --- |
| Jacket | Polyethylene, Outdoor, Black | 1.015 | 25.8 |
| Messenger | --- | --- | --- |
| Cable Width | --- | --- | --- |

Mechanical Specifications

| | | | |
|---------------------------------|-------------|-----|--------|
| Minimum Bend Radius, in. (mm) | | 8.0 | (203) |
| Product Weight, lbs/kft (kg/km) | (less reel) | 312 | (464) |

Customers are reminded that they are SOLELY responsible for confirming that all products are properly installed and used in accordance with all applicable codes and regulations.

Document: t10875jbx_1.8ghz17
Revision: 11.2.2017
Page: 1 of 2

Amphenol Broadband Solutions
358 Hall Avenue
Wallingford, CT 06492
Toll Free +1-800-677-2288
Toll +1-434-432-1800
Fax +1-434-432-1821
www.timesfiber.com

uncontrolled copy

All Rights Reserved,
Specifications subject to change without notice

| Electrical Specifications | | |
|---------------------------------|----------------|---------------|
| Impedance, Ω | 75 \pm 2 | |
| Velocity of Propagation, % | 87 | |
| Capacitance, Nominal | 15.3 pF/ft | 50.2 pF/m |
| DC Resistance | Ω / kft | Ω / km |
| Inner Conductor | 0.42 | 1.38 |
| Outer Conductor | 0.13 | 0.43 |
| Loop | 0.55 | 1.81 |
| Structural Return Loss, minimum | dB | |
| 5~1002 MHz | 30 | |

| Attenuation, Maximum @ 68 °F (20 °C) | | |
|--------------------------------------|-------------|------------|
| Frequency, MHz | dB / 100 ft | dB / 100 m |
| 5 | 0.09 | 0.30 |
| 55 | 0.32 | 1.05 |
| 211 | 0.64 | 2.09 |
| 250 | 0.70 | 2.31 |
| 270 | 0.73 | 2.40 |
| 300 | 0.78 | 2.56 |
| 330 | 0.82 | 2.69 |
| 350 | 0.84 | 2.76 |
| 400 | 0.91 | 2.99 |
| 450 | 0.97 | 3.18 |
| 500 | 1.03 | 3.38 |
| 550 | 1.09 | 3.58 |
| 600 | 1.14 | 3.74 |
| 750 | 1.29 | 4.23 |
| 870 | 1.41 | 4.63 |
| 1000 | 1.53 | 5.02 |
| 1100 | 1.61 | 5.28 |
| 1200 | 1.69 | 5.54 |
| 1218 | 1.70 | 5.58 |
| 1300 | 1.76 | 5.77 |
| 1400 | 1.84 | 6.04 |
| 1500 | 1.93 | 6.33 |
| 1600 | 2.00 | 6.56 |
| 1700 | 2.05 | 6.73 |
| 1794 | 2.12 | 6.96 |
| 1800 | 2.13 | 6.99 |

Customers are reminded that they are SOLELY responsible for confirming that all products are properly installed and used in accordance with all applicable codes and regulations.

Document: t10875jbx_1.8ghz17
Revision: 11.2.2017
Page: 2 of 2

Amphenol Broadband Solutions
358 Hall Avenue
Wallingford, CT 06492
Toll Free +1-800-677-2288
Toll +1-434-432-1800
Fax +1-434-432-1821
www.timesfiber.com

uncontrolled copy
All Rights Reserved,
Specifications subject to change without notice